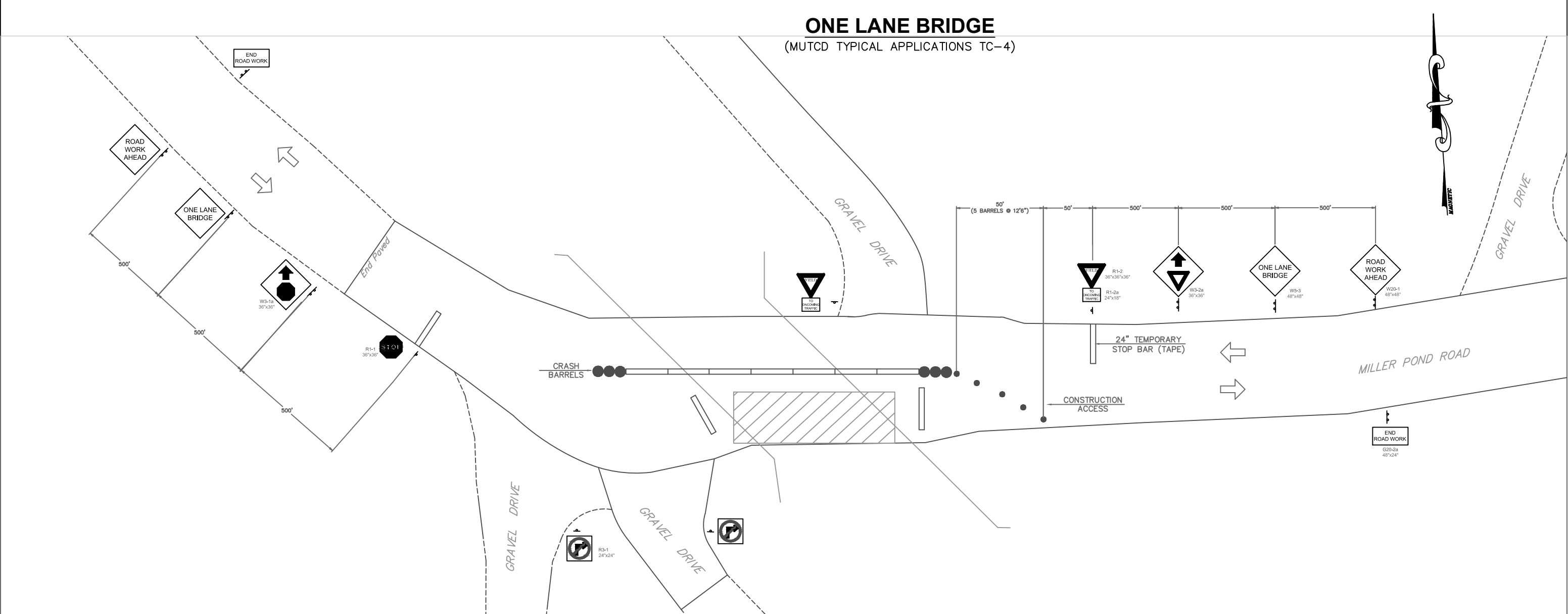


ONE LANE BRIDGE

(MUTCD TYPICAL APPLICATIONS TC-4)



SIGN # DESCRIPTION SIZE QTY SUPPORT

SIGN #	DESCRIPTION	SIZE	QTY	SUPPORT
W20-1	ROAD WORK AHEAD	48x48	2	(4) POSTS (2/SIGN)
W5-3	ONE LANE BRIDGE	48x48	2	(4) POSTS (2/SIGN)
W3-1A	STOP AHEAD	36x36	1	(2) POSTS (1/SIGN)
R1-1	STOP SIGN	36x36	1	(1) POSTS (1/SIGN)
R1-2	YIELD SIGN	36x36x36	2	(2) POSTS (2/SIGN)
R1-2A	TO ONCOMING TRAFFIC	24x18	2	---
W3-2A	YIELD AHEAD	36x36	1	(2) POSTS (1/SIGN)
R3-1	NO RIGHT TURN	24x24	2	(2) POSTS (2/SIGN)
G20-2	END ROAD WORK	48x24	2	(4) POSTS (2/SIGN)

- NOTES:
- INSTALL SIGNS WITH THE FLOW OF TRAFFIC
 - ADJUST SIGN SPACINGS TO ACCOMMODATE EXISTING SIGNS OR OBSTRUCTIONS - TRIM BRANCHES AS REG'D AFTER SIGNS ARE INSTALLED, VERIFY THAT:
DRIVER CAN SEE ALL DEVICES CLEARLY,
DRIVER KNOWS WHAT TO DO & WHERE TO GO
DRIVER HAS TIME/DISTANCE TO SLOW DOWN & STOP
 - REMOVE SIGNS AGAINST THE FLOW OF TRAFFIC

TRAFFIC BARRELS	5
JERSEY BARRIERS	9
CRASH BARRELS	6

LEGEND

- SIGN WITH 1 POST
- SIGN WITH 2 POSTS
- SIGN WITH E350 STAND
- FLAGGER
- TRAFFIC BARREL/CONE
- DELINEATOR
- TYPE III BARRICADE
- JERSEY BARRIER
- PORTABLE MESSAGE BOARD
- TEMPORARY SIGNAL
- WORK ZONE

TOWN OF GRANTHAM
STATE OF NEW HAMPSHIRE
BRIDGE
MILLER POND ROAD

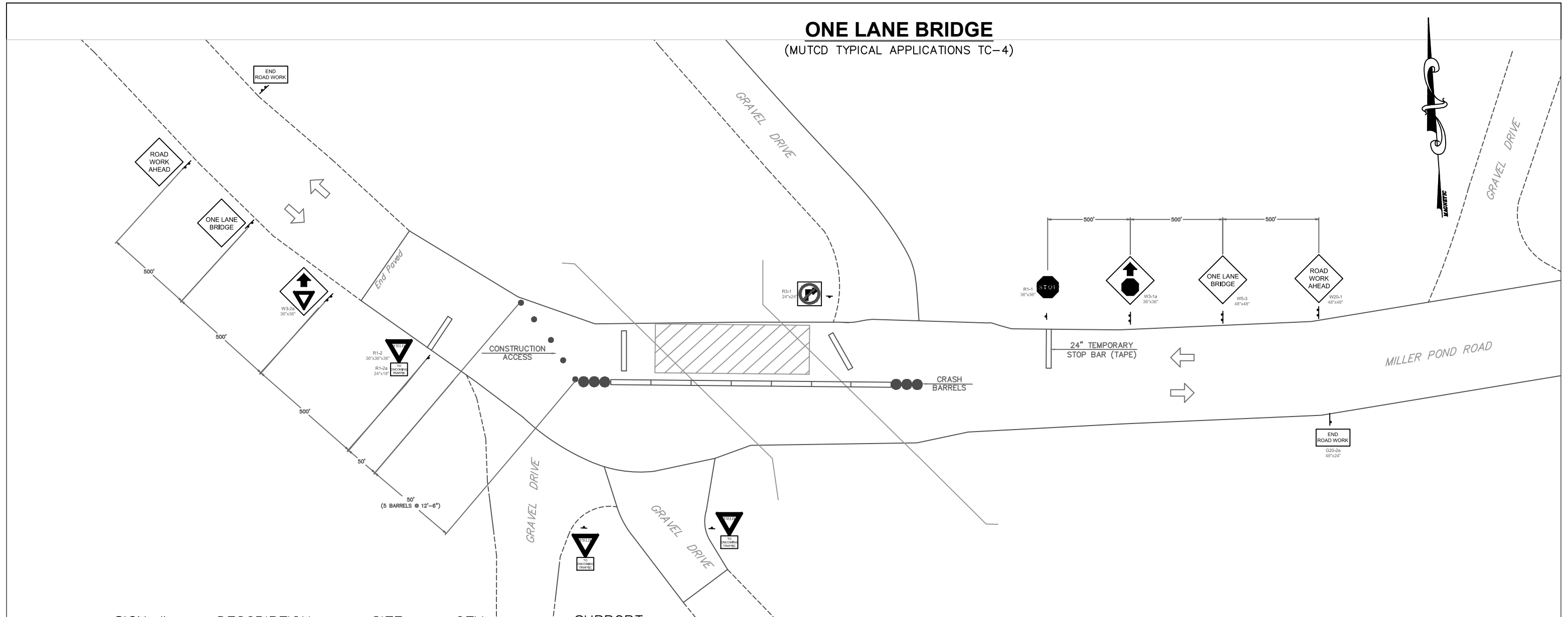
TRAFFIC CONTROL PLAN

SCALE	N.T.S.
DATE	JUNE 9, 2016
JOB NUMBER	1606
FILE	TC PLAN.dwg
SHEET	1 OF 2
DRAWING NUMBER	TC-1

DANIELS CONSTRUCTION
ASCUTNEY, VT 05030

ONE LANE BRIDGE

(MUTCD TYPICAL APPLICATIONS TC-4)



SIGN # DESCRIPTION SIZE QTY SUPPORT

SIGN #	DESCRIPTION	SIZE	QTY	SUPPORT
W20-1	ROAD WORK AHEAD	48x48	2	(4) POSTS (2/SIGN)
W5-3	ONE LANE BRIDGE	48x48	2	(4) POSTS (2/SIGN)
W3-1A	STOP AHEAD	36x36	1	(2) POSTS (1/SIGN)
R1-1	STOP SIGN	36x36	1	(1) POSTS (1/SIGN)
R1-2	YIELD SIGN	36x36x36	3	(3) POSTS (3/SIGN)
R1-2A	TO ONCOMING TRAFFIC	24x18	3	---
W3-2A	YIELD AHEAD	36x36	1	(2) POSTS (1/SIGN)
R3-1	NO RIGHT TURN	24x24	1	(1) POSTS (1/SIGN)
G20-2	END ROAD WORK	48x24	2	(4) POSTS (2/SIGN)

NOTES:


- INSTALL SIGNS WITH THE FLOW OF TRAFFIC
- ADJUST SIGN SPACINGS TO ACCOMMODATE EXISTING SIGNS OR OBSTRUCTIONS - TRIM BRANCHES AS REG'D AFTER SIGNS ARE INSTALLED, VERIFY THAT:
DRIVER CAN SEE ALL DEVICES CLEARLY,
DRIVER KNOWS WHAT TO DO & WHERE TO GO
DRIVER HAS TIME/DISTANCE TO SLOW DOWN & STOP
- REMOVE SIGNS AGAINST THE FLOW OF TRAFFIC

TRAFFIC BARRELS	5
JERSEY BARRIERS	9
CRASH BARRELS	6

LEGEND

- SIGN WITH 1 POST
- SIGN WITH 2 POSTS
- SIGN WITH E350 STAND
- FLAGGER
- TRAFFIC BARREL/CONE
- DELINEATOR
- TYPE III BARRICADE
- JERSEY BARRIER
- PORTABLE MESSAGE BOARD
- TEMPORARY SIGNAL
- WORK ZONE

TOWN OF GRANTHAM STATE OF NEW HAMPSHIRE	
BRIDGE MILLER POND ROAD	
TRAFFIC CONTROL PLAN	
SCALE	N.T.S.
DATE	JUNE 9, 2016
JOB NUMBER	1606
FILE	TC PLAN.dwg
SHEET	2 OF 2
DRAWING NUMBER	TC-2



**DANIELS
CONSTRUCTION**
ASCUTNEY, VT 05030

TYPICAL APPLICATION

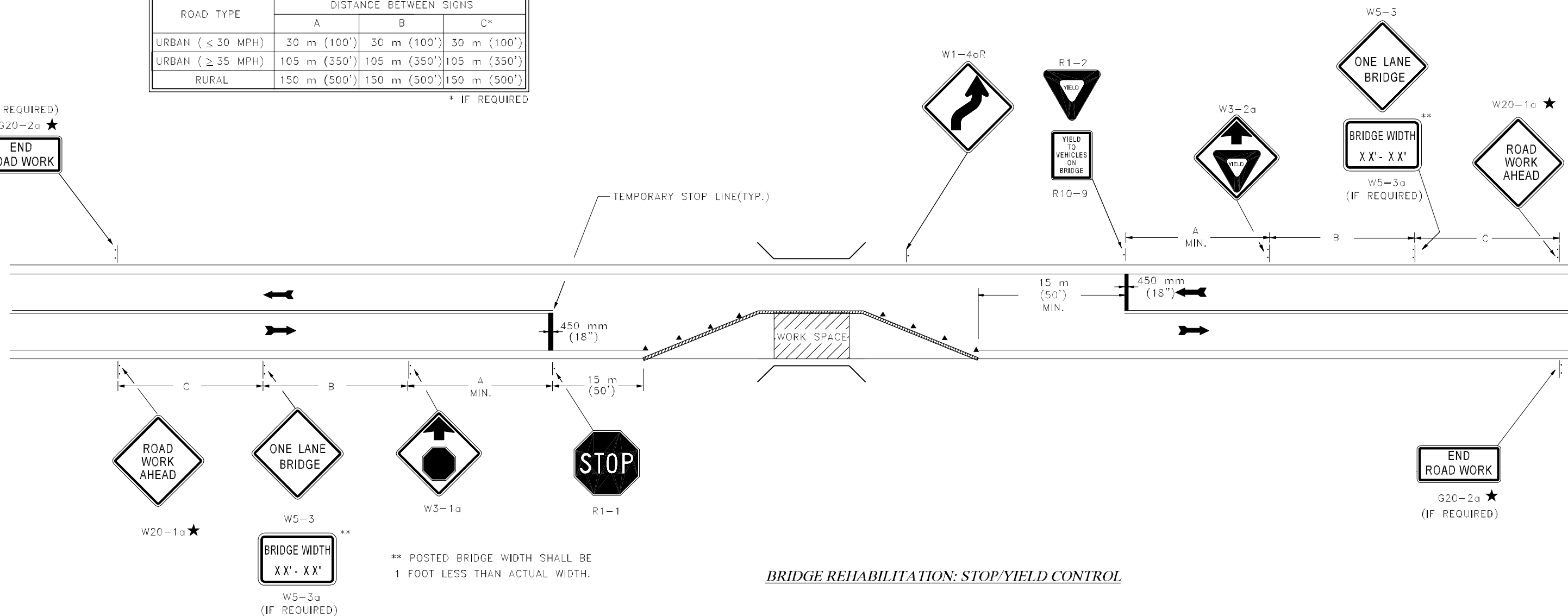
(NOT TO SCALE)

ROAD TYPE	SUGGESTED ADVANCE WARNING SIGN SPACING		
	DISTANCE BETWEEN SIGNS		
	A	B	C*
URBAN (<= 30 MPH)	30 m (100')	30 m (100')	30 m (100')
URBAN (>= 35 MPH)	105 m (350')	105 m (350')	105 m (350')
RURAL	150 m (500')	150 m (500')	150 m (500')

* IF REQUIRED

(IF REQUIRED)
G20-2a ★

END ROAD WORK



BRIDGE REHABILITATION: STOP/YIELD CONTROL

** POSTED BRIDGE WIDTH SHALL BE 1 FOOT LESS THAN ACTUAL WIDTH.

★ SEE AMENDMENT NO. 8 ON TC-1

GENERAL NOTES

- THIS TYPICAL APPLICATION MAY BE USED AS AN ALTERNATE TO MUTCD FIGURE 6H-10, WHEN THE FOLLOWING CONDITIONS EXIST:
 - TRAFFIC VOLUME IS SUCH THAT SUFFICIENT GAPS EXIST FOR TRAFFIC THAT MUST YIELD.
 - DRIVERS FROM BOTH DIRECTIONS MUST BE ABLE TO SEE APPROACHING TRAFFIC THROUGH AND BEYOND THE WORK SITE.
- THIS TYPICAL APPLICATION MAY ALSO BE USED AS AN ALTERNATE TO MUTCD FIGURE 6H-11 WHERE TRAFFIC VOLUMES EXCEED 400 AADT AND TEMPORARY TRAFFIC SIGNALS ARE NOT JUSTIFIED.
- EXISTING PAVEMENT MARKINGS SHALL BE REMOVED AND TEMPORARY MARKINGS INSTALLED AS ORDERED.

- REGULATORY SIGN PLACEMENT SHALL BE APPROVED BY BUREAU OF TRAFFIC.
- HAZARD IDENTIFICATION BEACONS OR TYPE A FLASHING WARNING LIGHTS MAY BE MOUNTED WITH WARNING SIGNS, IF WARRANTED.
- THE USE OF BARRIER IS ANTICIPATED FOR MOST SITUATIONS REQUIRING APPLICATION OF THIS LANE CLOSURE. A DECISION NOT TO USE BARRIER SHOULD BE BASED ON THE NEED DETERMINED BY ENGINEERING JUDGMENT. (TAPER RATES FOR BARRIER ARE FOUND ON THE PORTABLE CONCRETE BARRIER DETAIL INCLUDED IN THE PLANS.)
- SIGNING SHOWN IS FOR WORK ON A BRIDGE. WORK ON ROADWAY SITES WILL REQUIRE THE SUBSTITUTION OF ROAD SIGNS FOR BRIDGE SIGNS.

LEGEND

- PORTABLE BARRIER
- CHANNELIZING DEVICES